

Océ TCS500

HIGHLY RECOMMENDED



Summary Report

Wide Format Print • Copy • Scan
E Size: Color/60 sec. • B&W/40 sec.



Key Buyer Benefits

- The Océ TCS500's true growth path from a printer only version to adding the Océ TCS500 scanner for copying and Océ Scan Logic® software for scanning makes it a fully functional color wide format MFP.
- The Océ Image Logic® technology, an intelligent image enhancement capability that improves copy and scan quality automatically. (see pg 5)
- Océ Dynamic Switching technology takes the guess work out of print settings by automatically adjusting print quality for crisp lines, text and detailed images without manually selecting settings. (see pg 3)
- The Océ Power Logic® Controller enables processing, printing, copying, and scanning to be performed simultaneously, increasing productivity while reducing wait time.
- The Océ TCS500 is the first and only color wide format printer available with a three roll configuration, giving it unmatched media capacity.
- On-the-fly ink and paper replacement allows for uninterrupted printing and copying.
- Authorized users have full Print, Copy, and Scan Queue control with the Océ Power Logic Controller, and the Océ Queue Manager for complete control over workflow.
- The easy to use, large printer operation panel with intuitive graphical user interface for quick and easy device management prevents user errors.
- Océ again incorporates its green button approach for simple one touch operation with its easy to use large scanner operation panel for copying and scanning.
- Ten scan presets for the most used scan destinations allow more time for scanning and less time figuring out the right settings.
- Five copy presets for simplified workflows make copying less intimidating for new users.
- The optional output stacker that accommodates up to 200 E sized prints/copies is mobile, and makes working with large documents less cumbersome.

Overview pg 2

Print pg 3

Scan pg 5

Summing it Up pg 6

If you BUY or SELL wide format devices, read the full 57 page test report on the Océ TCS500 and competitive devices at www.bertl.com

Overview

100% Independent Third Party Analysis



The Océ TCS500 is an extremely versatile color wide format system suited for a variety of markets including CAD, AEC, GIS, reprographers, corporate CRDs, government and legal vertical sectors, and front office environments.



True growth path

The Océ TCS500 starts as a printer-only version with various finishing options. It can be expanded with the optional Océ TCS500 scanner for copying, Océ Scan Logic software for scan to file, Océ PrintExec® Workgroup for remote job submission, and Océ Account Center for controlling usage and costs.

Out of the back office and into the front

With the Océ TCS500 printer, producing color wide format plots in-house has become an attractive alternative for smaller architectural and engineering firms that now outsource printing to reprographers. By adding the optional Océ TCS500 scanner and Océ Scan Logic software, these companies can publish documents electronically to network folders or directly to an FTP location to further reduce costs and eliminate a need for costly reproduction of multiple sets of documents.

Concurrency? Yes!

Copy, Scan, Process & Print — All done Simultaneously

For demanding workflows, users can print, copy, or scan simultaneously with the powerful Océ Power Logic controller and can easily manage these jobs through the Océ Queue Manager. Reprinting scans, copies, or prints is as simple as selecting a job in the history queue, opening print properties and changing print options (such as print quality, media, and number of copies). This functionality is often overlooked, but can increase productivity immensely.

Uninterrupted printing, copying, and scanning

On the Océ TCS500, media can be replaced on the fly. The maximum three-roll capacity should be a bonus in busy, diverse workflows. Work can continue without interruption, even during ink tank replacement. For further productivity, overnight printing optimization can be selected to calibrate during a print run at specified intervals for unattended printing.

Worldwide Support

The Océ TCS500 is also backed by Océ's worldwide service organization that guarantees peace of mind, no matter where the business is located.

Print Device Features Summary

Printing Method	9 semi-permanent print heads
Printheads	CMY x 2 (dye-based) Black x 3 (pigment-based)
Nozzle Configuration	640 nozzles each print head
Maximum Print Speed	Color 60 sec./E size B&W 40 sec./E size
Maximum Print Resolution	600 x 600 dpi
Minimum Pen	0.003"
Calibration	<ul style="list-style-type: none"> · Auto print head alignment · Failing nozzle compensation · Unattended printing in the overnight mode
Color Modes	B/W, Grayscale, and Color
Ink Tanks	200ml and 400ml ink tanks for CMYK
Ink Level Monitoring	Ink level indication on the printer operation panel and through Océ Remote Logic Out of Ink signaling.
Cutter	Guaranteed for life of printer (4 years) per supported media types
Print Direction	Bidirectional in all modes
Printer Driver	WPD, HDI Océ Adobe PostScript 3 (optional)

Print

100% Independent Third Party Analysis



Print Productivity

Print speeds are directly related to the mode that is selected in the print driver. BERTL printed various file types with various content, from AutoCAD color technical line drawings, to complex colorful architectural renderings, to high quality images with overlays. Three choices of print quality modes—Check, Release, and Presentation—can be selected with any of the Océ TCS500 print drivers.

Check mode produces quick prints where quality is not a factor on inexpensive paper. It is used to check work before final prints are made.

Release mode is the standard mode that will be used most often. In Release mode, the printer can use its dynamic switching technology, drastically reducing print times, while maintaining quality at 300 dpi.

Presentation mode prints at the highest quality and is generally reserved for printing high quality images at 600 dpi, or when high quality final prints are needed for final review. It can also be used for archival purposes.

BERTL's tests revealed the benefits of Océ dynamic switching in Release mode. Speeds changed from file to file, depending on the amount of text in the document or whether it was black and white or color.

Figure 1 explains how dynamic switching effects print speeds.

Figure 2 shows how this works with an actual document used in BERTL's tests.

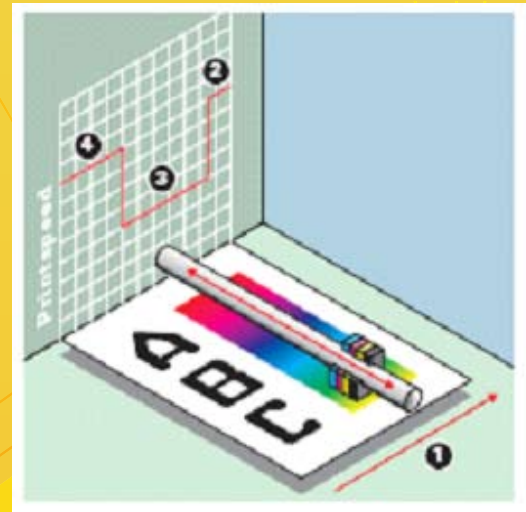


Figure 1

- 1 Paper Transport
- 2 Maximum print speed for lines and text
- 3 High print speed for area fills
- 4 Maximum print speed for lines and text

BERTL Test Document for Dynamic Switching



Figure 2

Print

100% Independent Third Party Analysis



Print Productivity

Printing time was measured for an accurate report of how the modes affected print times for various documents. While conducting this test, there was a noticeable change in print times in Release mode. The printer maintained rated speeds for Check and Presentation modes.






Presentation mode prints at a set speed, regardless of the document. Therefore, this mode was used as a benchmark to measure the difference in speed when compared to Release mode.

- Test 1 printed 37.7 percent faster than in Presentation mode.
- Test 2 printed 40 percent faster than in Presentation mode.
- Test 3 printed 50.5 percent faster than in Presentation mode.
- Test 4 printed 34.2 percent faster than in Presentation mode.
- Test 5 printed 59.9 percent faster than in Presentation mode.

While there were varying increases in productivity, depending on the original, we experienced a significant increase of 20 percent overall in Test 5, the 24"x36" BERTL test pattern. This was due to the document composition: approximately 30 percent of the document was made up of lines and text, and 70 percent was full color pictures.

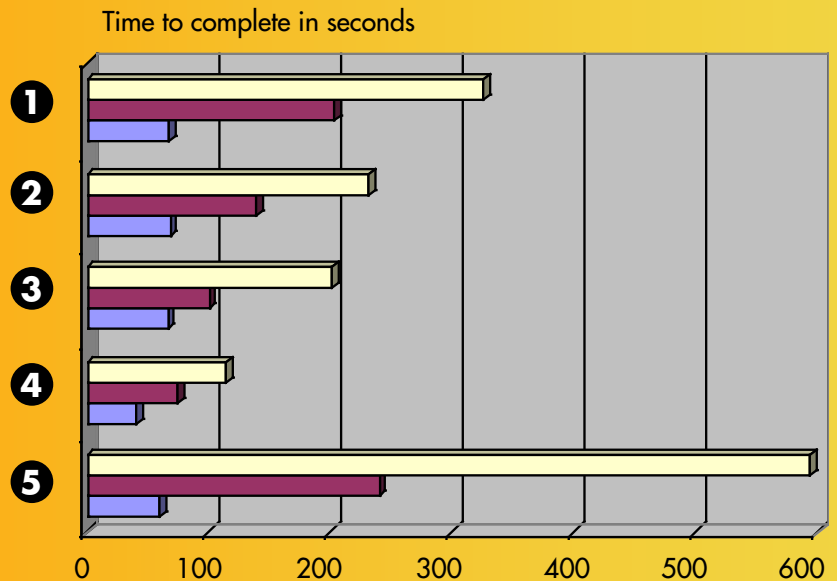
This has a big impact in AEC workflows or any workflow where the documents are made up of mostly lines and text.

Print Productivity Timed Test by Mode

	File Description	Check	Release	Presentation
	1 Test 1-page 17"x45" rendered color TIFF	67 sec.	203 sec.	326 sec.
	2 Test 2-page 11"x17" PDF renderings in color	68 sec.	139 sec.	232 sec.
	3 Test 2-page 11"x17" PDF renderings: 1 black, 1 color	66 sec.	100 sec.	202 sec.
	4 Test 1-page 11"x17" rendering in color	40 sec.	75 sec.	114 sec.
	5 Test 1-page BERTL Test 24"x36" PDF color	60 sec.	240 sec.	594 sec.

Print Productivity by Mode

 Draft  Release  Presentation



Scan

100% Independent Third Party Analysis

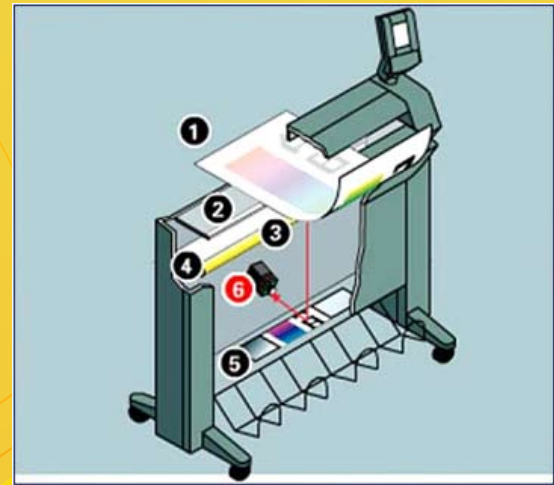


Scanner Technology

Scanning is optional with the addition of the Océ TCS500 scanner and Océ Scan Logic with View Logic software.

Océ's single high-resolution color camera with a three-color CCD and a single mirror offers high quality, high resolution scans at up to 600 dpi—a feature not found on most wide format scanners. The scanner doesn't have a warm up time and needs less maintenance as compared to others with multiple cameras that have to be calibrated periodically, and, in some cases, always leave noticeable differences between cameras.

Scan quality is further enhanced by Océ's Color Image Logic, that is incorporated into the Océ TCS500 scanner. Océ Color Image Logic automatically performs background compensation, filter segmentation, color management, and half toning for crisp accurate scans every time, no matter the mode chosen. Hard copy originals are captured in high quality for archival purposes or reprints in the future.

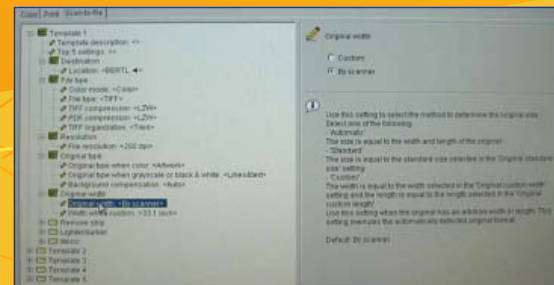


Scan Destinations

Maximum of 10 scan destinations can be set up in Océ Scan Manager through settings editor on the Océ Power Logic Controller.

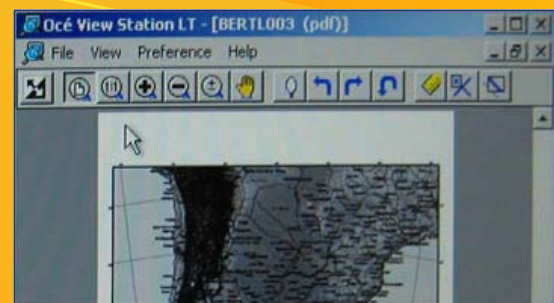
The destinations include:

- Scan to local controller
- Scan to a Microsoft Windows network location with Server Message Block (SMB)
- Scan to an Internet location with File Transfer Protocol (FTP).



Océ View Logic Software

Océ View Logic software makes scanning easy by giving the user an online preview of images being scanned. Many useful tools are included such as ruler, magnification, rotate, and flip, so users can check the quality before the file gets sent to its final destination.



For the full 57 page in-depth report on the Océ TCS500, please log on to www.bertl.com

Océ TCS500

HIGHLY RECOMMENDED



Summing it Up

The Océ TCS500 offers a fast CAD color wide format printer driven by a very powerful controller with a true multitasking ability that allows for copying, printing, and scanning to occur concurrently. This drastically increases productivity.

The Océ TCS500 is a great entry into CAD/technical color wide format for small operations looking to add color to their workflow up to advanced reprographers seeking to increase productivity in color. Users at either end of the spectrum will find the advanced technologies like Océ Color Image Logic for copying and scanning, Océ Dynamic Switching for printing, and Océ Print Exec Workgroup LT for remote job submission a combination that is hard to beat.

The Océ TCS500 has a true growth path that gives users the option of purchasing the printer only, and as the need arises, adding a scanner for copying and Océ Scan Logic software for scanning.

The powerful Océ Print Logic Controller that comes standard with the Océ TCS500 gives full control over print, copy, and scan workflows all in one place.

The Océ Print Exec Workgroup (full version) is an optional remote job submission tool, but will pay dividends in complex workflows where multiple users need access to the system. The Océ Print Exec Workgroup LT is a basic job submission tool that is included with the Océ TCS500 and is offered at no additional cost.

The five presets for copying and scanning are easy to set up and give the user one-touch functionality at the operation panel.

The Océ TCS500 offers zero dry time on all media types except photo gloss. With most inkjet devices, drying time is required on photo gloss media. BERTL analysts found that the images that are produced by the Océ TCS500 are of high quality for the markets that the system is intended.

Océ paid extreme attention to the overall usability when developing the Océ TCS500. The three-roll, 900 linear foot capacity is unmatched in the industry. Paper unloading and loading is the easiest we've seen.

ABOUT BERTL



To master the complexities of choosing a wide format device for specific applications or corporate workplaces, buyers and salespeople must have access to product information that is easy to understand and emphasizes product performance, value for money, color management tools, wide format technologies, and a "who's who" of wide format manufacturers. Become a BERTL subscriber today for immediate access to the latest and most complete library of 100 percent independent analysis reports and the largest, most comprehensive comparison database available on the market.

To become a subscriber, go to www.BERTL.com or call 1 732 761 2311 today.

